

*Dress up*

Bathroom Design

**arcom**

Accessories, lights and wallpaper complete the look in the bathroom space. A wealth of solutions that match the furniture and make the most of the space.

*Dress up*

**Accessori,  
complementi,  
luci e carte da parati  
completano il look  
dell'ambiente  
bagno di casa.  
Tante soluzioni  
che si abbinano  
all'arredo e valorizzano  
lo spazio.**

**arcom**

parete colour  
colour wall  
NCS S 0300-N

appendiabiti  
hangers  
Ø10 cm  
art. X936/42

wall paper  
texture /cod. 03E grey

dress holders  
L.45 x P.30 x H.80 cm  
art. X921/287

tappeto - rug  
L.310 x P.200 cm  
art. X871/329

**Il bagno veste total white. Ogni elemento è caratterizzato dal bianco, che riprende e amplifica la luminosità dell'ambiente.**

The bathroom is dressed all in white. Each element is white, echoing and amplifying the bright and airy feel in the space.

**Design, colori e grafiche travalicano i limiti del bagno, creando un effetto di continuità tra tutti gli ambienti della casa.**

4 The design, colours and patterns go beyond the confines of the bathroom space, creating continuity in all rooms in the home.



○ wall paper  
modern / cod. 01C

○ wall paper  
modern / cod. 01A

parete colour  
colour wall  
NCS S 6020-R90B

○ mod. Roller  
H. 40 Ø 2.5 cm  
art. 597A/160

○ pouf  
Ø 40 x H. 45 cm  
art. X904/207

○ tavolino  
occasional table  
L. 45 x H. 52 cm  
art. X912/179

**Design essenziale e materiali grezzi creano uno scenario autentico e genuino, che fa sconfinare la zona bagno nella natura.**

6 A simple design and materials in their raw state create a genuine, authentic look that brings nature into the bathroom.



○ wall paper  
onda

○ appendiabiti  
hangers  
Ø10 cm  
art. X936/42

parete colour  
colour wall  
NCS S 7502-Y

○ mod. Goccia  
Piccola / Small H 20  
art. 596V/209

○ pouf legno - wood  
L.28 x P.28 x H.55 cm  
art. X907/420

○ dress holders  
L.35 x P.40 x H.170 cm  
art. X920/280

# sistemi espositivi



## dressup collection

Mix and match accessories, wallpaper and furnishings to create different bathroom looks.



L'accostamento e l'abbinamento di complementi, carte da parati e accessori dà forma a diverse soluzioni di ambiente bagno.



*soft colours*

# progetti su misura

Con il software TRICAD LITE, ogni rivenditore guida il cliente nelle fasi di progettazione del bagno in 3D e supporta l'azienda nella gestione degli ordini.

With the TRICAD LITE software, every dealer guides the customer using the 3D bathroom design phases and supports the company in order management.

NCS S 4502Y

NCS S 4502B0

*Dress up*

ECO MALTA

ROVERE

WALL PAPERS

FABRIC

# 01

## Suggerimenti per il sistema espositivo

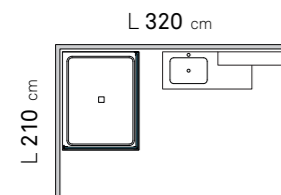
Display system recommendations



12

### COMPOSIZIONE LINEARE

Linear composition



### ELEMENTI

Element

Dress holders: art. X920/280

Tappeto / Rugs: art. X872/329

Lampada / Lamps: mod. Roller art. 597A/160

Pouf: Lino art. X900/210 Surf/Rally art. X900/165

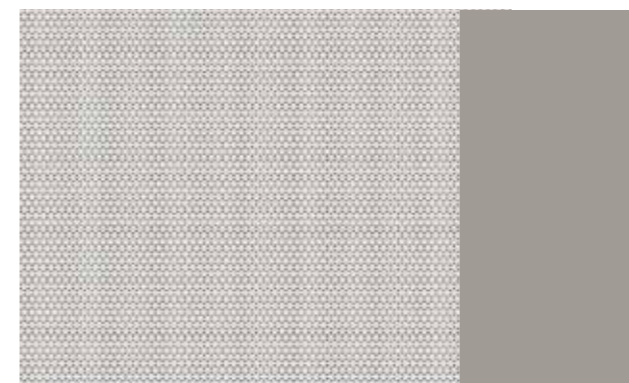
## Combinazioni di carte da parati e tinte NCS consigliate

Recommended wallpaper and NCS colour combinations

### PER UN AMBIENTE DAI TONI CALDI

For a space with warm tones

#### OPZIONE 1



01B

NCS S 4502Y

#### OPZIONE 2



01D

NCS S 4502Y

13

### PER UN AMBIENTE DAI TONI FREDDI

For a space with cool tones

#### OPZIONE 1



Iride b/n

NCS S 4502B0

#### OPZIONE 2



Piume

NCS S 4502B0

Per ottenere ambienti più luminosi vi consigliamo di non usare le tinte NCS e lasciare la parete bianca.  
To brighten the space, we recommend avoiding NCS shades and leaving the wall white.



# 02

## Suggerimenti per il sistema espositivo

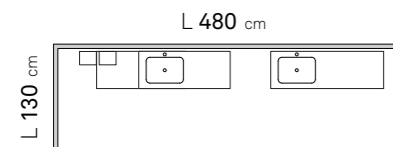
Display system recommendations

14



### COMPOSIZIONE LINEARE

Linear composition



### ELEMENTI

Element

Dress holders: art. X921/287  
Tappeto / Rugs: art. X871/329

## Combinazioni di carte da parati e tinte NCS consigliate

Recommended wallpaper and NCS colour combinations

### PER UN AMBIENTE DAI TONI CALDI

For a space with warm tones



01D

NCS S 4502Y

### PER UN AMBIENTE DAI TONI FREDDI

For a space with cool tones



02C

NCS S 4502BO

**Una guida dedicata all'opera di allestimento all'interno dei punti vendita con la scelta attenta di oggetti che valorizzano e si distinguono nel mercato.**

Its a guide dedicated to the work of setting up inside sales outlets with a careful selection of objects that enhance and stand out in the market.

15

Per ottenere ambienti più luminosi vi consigliamo di non usare le tinte NCS e lasciare la parete bianca.  
To brighten the space, we recommend avoiding NCS shades and leaving the wall white.

# 03

## Suggerimenti per il sistema espositivo

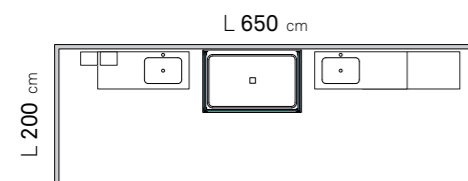
Display system recommendations

16



### COMPOSIZIONE LINEARE

Linear composition



### ELEMENTI

Element

Dress holders: art. X920/280

Lampada / Lamps: mod. Roller art. 597A/160

Tappeto / Rugs: art. X872/329

## Combinazioni di carte da parati e tinte NCS consigliate

Recommended wallpaper and NCS colour combinations

### PER UN AMBIENTE DAI TONI CALDI

For a space with warm tones



05A

NCS S 4502Y

17

### PER UN AMBIENTE DAI TONI FREDDI

For a space with cool tones



Iride b/n

NCS S 4502B0

Per ottenere ambienti più luminosi vi consigliamo di non usare le tinte NCS e lasciare la parete bianca.  
To brighten the space, we recommend avoiding NCS shades and leaving the wall white.

# 04

## Suggerimenti per il sistema espositivo

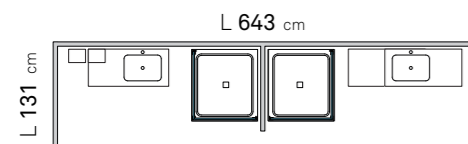
Display system recommendations



18

### COMPOSIZIONE LINEARE

Linear composition



### ELEMENTI

Element

Tappeto / Rugs: art. X871/329

Dress holders: art. X924/210

Lampada / Lamps: mod. Roller art. 597A/160

Pouf: Lino art. X900/210 Surf/Rally art. X900/165

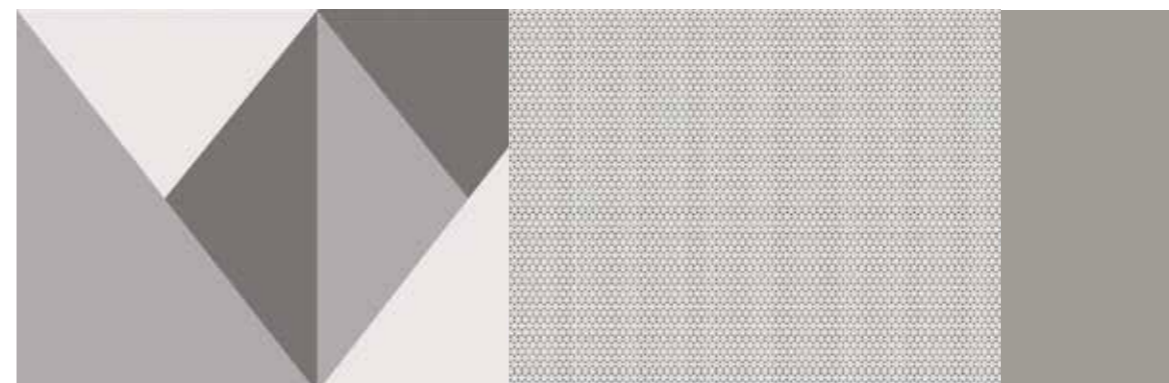
Tavolino / Tables: art. X912/179

## Combinazioni di carte da parati e tinte NCS consigliate

Recommended wallpaper and NCS colour combinations

### PER UN AMBIENTE DAI TONI CALDI

For a space with warm tones



01A

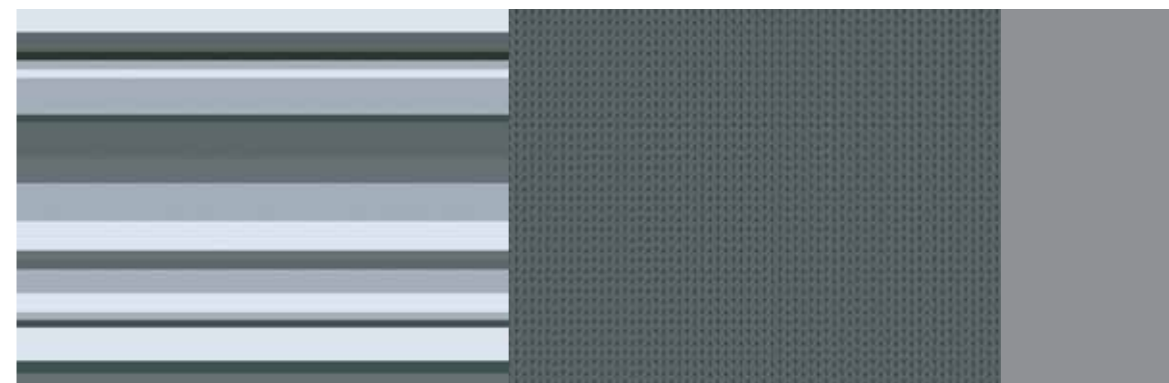
01B

NCS S 4502Y

19

### PER UN AMBIENTE DAI TONI FREDDI

For a space with cool tones



02C

02B

NCS S 4502BO

Per ottenere ambienti più luminosi vi consigliamo di non usare le tinte NCS e lasciare la parete bianca.  
To brighten the space, we recommend avoiding NCS shades and leaving the wall white.

## 05

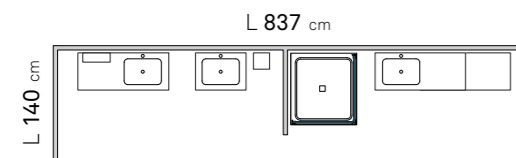
Suggerimenti  
per il sistema espositivo

Display system recommendations



## COMPOSIZIONE LINEARE

Linear composition



## ELEMENTI

Element

Tappeto / Rugs: art. X871/329

Dress holders: art. X920/280 e art. X924/210

Pouf: Lino art. X900/210 Surf/Rally art. X900/165

Combinazioni di carte da parati  
e tinte NCS consigliate

Recommended wallpaper and NCS colour combinations

## PER UN AMBIENTE DAI TONI CALDI

For a space with warm tones

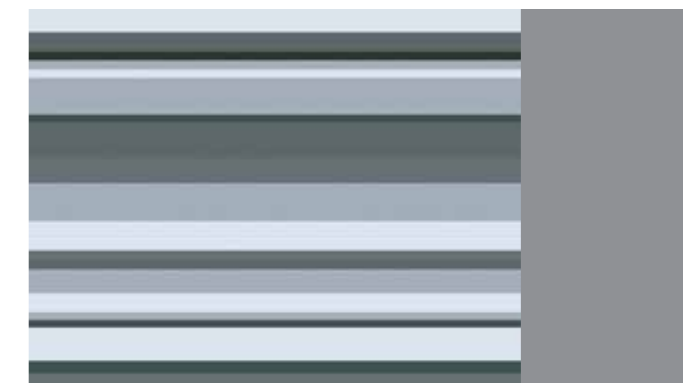


01D

NCS S 4502Y

## PER UN AMBIENTE DAI TONI FREDDI

For a space with cool tones



02C

NCS S 4502B0

# 06

## Suggerimenti per il sistema espositivo

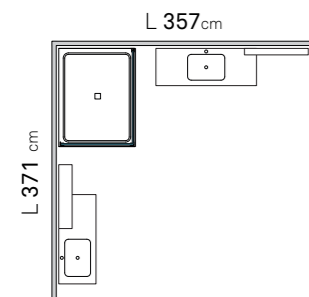
Display system recommendations

22



### COMPOSIZIONE ANGOLARE

Corner composition



### ELEMENTI

Element

Tappeto / Rugs: art. X872/329

Dress holders: art. X924/210

Pouf: Lino art. X902/203 Surf/Rally art. X902/161

## Combinazioni di carte da parati e tinte NCS consigliate

Recommended wallpaper and NCS colour combinations

### PER UN AMBIENTE DAI TONI CALDI

For a space with warm tones

#### OPZIONE 1



01D

NCS S 4502Y

#### OPZIONE 2



04A

04D

NCS S 4502Y

23

### PER UN AMBIENTE DAI TONI FREDDI

For a space with cool tones

#### OPZIONE 1



Iride

NCS S 4502B0

#### OPZIONE 2



Marrakesh

NCS S 4502B0

Per ottenere ambienti più luminosi vi consigliamo di non usare le tinte NCS e lasciare la parete bianca.  
To brighten the space, we recommend avoiding NCS shades and leaving the wall white.

# 07

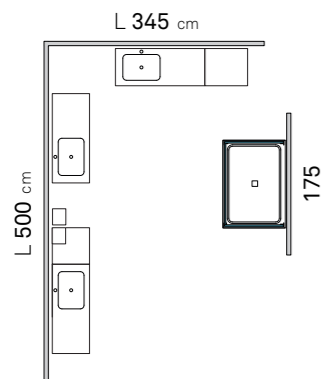
## Suggerimenti per il sistema espositivo

Display system recommendations



24

### COMPOSIZIONE ANGOLARE Corner composition



### ELEMENTI Element

Element

Lampada / Lamps: mod. Roller art. 597A/160

Tappeto / Rugs: art. X871/329

Dress holders: art. X921/287

## Combinazioni di carte da parati e tinte NCS consigliate

Recommended wallpaper and NCS colour combinations

### PER UN AMBIENTE DAI TONI CALDI For a space with warm tones

For a space with warm tones



05C

05A

NCS S 4502Y

25

### PER UN AMBIENTE DAI TONI FREDDI For a space with cool tones

For a space with cool tones



Iride b/n

NCS S 4502B0

Per ottenere ambienti più luminosi vi consigliamo di non usare le tinte NCS e lasciare la parete bianca.  
To brighten the space, we recommend avoiding NCS shades and leaving the wall white.

# vestire lo showroom

*Dress up*

28	<b>DRESS HOLDERS</b> Dress holders
30	<b>POUF</b> Pouf
32	<b>PANCHETTA</b> Bench
34	<b>POUF LEGNO</b> Wooden pouf
36	<b>TAVOLINI</b> Tables
38	<b>MENSOLE / APPENDIABITI</b> Shelves and hangers
40	<b>LAMPADE</b> Lamps
44	<b>TAPPETI</b> Rugs
46	<b>CARTE DA PARATI</b> Wallpaper

# dress holders

**Pratici, originali ed eleganti, con una struttura in metallo e i piani in finiture a scelta.**

Practical, original and elegant, with a metal structure and a choice of surface finishes.

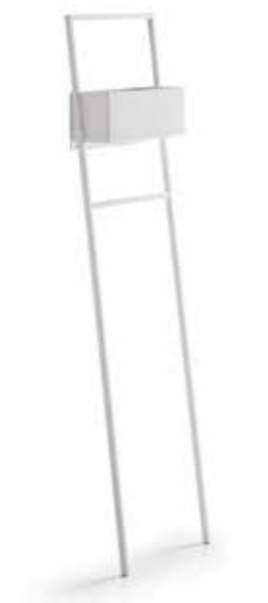
28



L.35 x P.40 x H.170 cm  
art. X920/280



L.45 x P.30 x H.80 cm  
art. X921/287



L.35 x H.140 cm  
art. X924/210



L.34,5 x P.21 x H.85 cm  
art. X922/140

**STRUTTURA / STRUCTURE**

Bianco / White  
Grigio antracite / Grey

**RIPIANI / SHELVES**

Bianco lucido e opaco / Gloss and matt white  
50 colori lucidi e opachi / 50 gloss and matt colours  
Olmo  
Rovere colore / Coloured oak  
Rovere nodato / Oak  
Larice monocolore / Single-colour



29



# pouf

**Morbidi e di carattere, con forme geometriche e originali e cuciture in tinta.**

Soft but with personality, with original, geometric shapes and matching.



Ø 60 x H.27 cm  
Lino art. X901/252  
Surf/Rally art. X901/203



Ø 40 x H.45 cm  
Lino art. X900/210  
Surf/Rally art. X900/165



Ø 40 x H.45 cm  
Lino art. X904/249  
Surf/Rally art. X904/207



**Manico pouf**  
cuoio marrone  
**Pouf handle**  
brown leather



L.40 x P.40 x H.45 cm  
Lino art. X902/203  
Surf/Rally art. X902/161



L.60 x P.60 x H.27 cm  
Lino art. X903/242  
Surf/Rally art. X903/193

## TESSUTO / FABRIC



Lino 01 Lino 04 Lino 15 Lino 16 Lino 18 Lino 23 Lino 24 Lino 30 Lino 32 Lino 49 Lino 55 Lino 58



Rally 111 Rally 403 Rally 600 Rally 601 Rally 602 Surf 101 Surf 103 Surf 107



# panchetta

**Composta da semplici listelli di legno,  
per un design essenziale ispirato alla sauna.**

Made up of simple wooden slats,  
this uncomplicated design is inspired by a sauna.

32



L.120 x P.38 x H.45 cm  
art. X909/553

**STRUTTURA / STRUCTURE**

Rovere naturale / Natural oak



33

# pouf legno

Elementi originali per arredare l'ambiente e creare pratici piani di appoggio.

Original items to furnish the space and create practical surfaces.

34



**POUF LEGNO**  
wooden pouf

L.28xP.28xH.55cm  
art. X907/420



**POUF LEGNO E METALLO**  
wood and metal footstool

L.28 x P.28 x H.55 cm  
art. X908/438



35

# tavolini

**Rotondi o quadrati, colorati o decorati, i tavolini completano l'arredo con stile.**

Whether round or square, colourful or decorative, these tables complete the look with style.



Ø 45 x H.52 cm  
art. X912/179



L.45 x 45 x H.52 cm  
art. X913/214

**STRUTTURA / STRUCTURE**

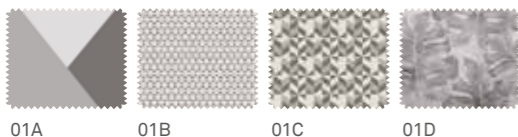
Bianco / White  
Grigio antracite / Grey

**RIPIANI / SHELVES**

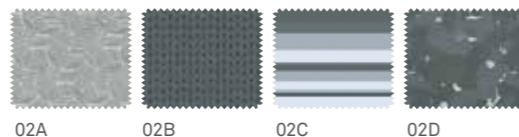
Bianco lucido e opaco / Gloss and matt white  
50 colori lucidi e opachi / 50 gloss and matt colours  
Decorazioni grafici / Graphic motifs

**DECORO / GRAPHIC**

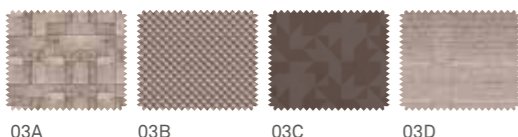
**Family modern**



**Family mix**



**Family texture**



**Family elegance**



# mensole appendiabiti

**Due forme, tre dimensioni e tanti colori:  
perfetti per appendere, sostenere e decorare.**

Two forms, three dimensions, and lots of colours:  
perfect for hanging up, supporting and decorating.

modello T



h 17,5



h 15



h 12,5

L.35 cm  
art. X930/77

L.30 cm  
art. X931/63

L.25 cm  
art. X932/56



Ø12 cm  
art. X935/49



Ø10 cm  
art. X936/42



Ø8 cm  
art. X937/35

## FINITURA / FINISHES

50 colori lucidi e opachi / 50 gloss and matt colours

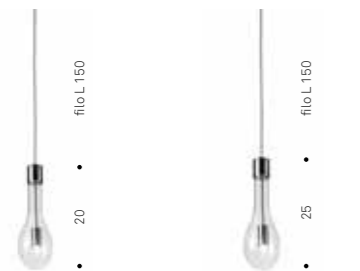


# lampade

**Le sospensioni scendono dal soffitto per dare luce all'ambiente e all'arredo.**

The pendants hang from the ceiling, lighting up the room and the furnishings.

## modello Goccia



Piccola / Small H 20  
art. 596V/209

Grande / Large H 25  
art. 596Z/211

### STRUTTURA / STRUCTURE

Lampada alogena a sospensione  
Suspended halogen lamp

### FINITURA / FINISHES

Finitura cromo e vetro trasparente  
Chrome and clear glass finish

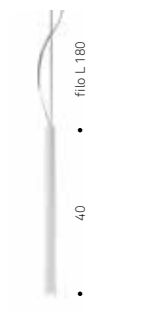
### ATTENZIONE!

La forma e la dimensione della parte in vetro, possono variare a causa della lavorazione fatta a mano.

### WARNING!

The shape and size of the glass part may vary as it is processed by hand.

## modello Roller



H 40 Ø 2.5 cm  
art. 597A/160

### STRUTTURA / STRUCTURE

Lampada sospensione a LED  
LED hanging lights

### FINITURA / FINISHES

Finitura cromo con tubolare in vetro bianco  
Chrome finish with white glass tubing

Potenza / Power 2W  
Classe / Class A+  
Lumen 1000  
Kelvin 4000



modello Goccia

modello Roller

# lampade

Mod. SATURNO in DIBOND

**Come pianeti da un'altra galassia:  
le lampade affascinano con la loro grazia ed eleganza.**

Like planets from another galaxy, the lights have real appeal thanks to their graceful and elegant design.



art. 597S/120

1 lato grafico / 1 graphic side  
1 lato colore in abbinata / 1 color side matched

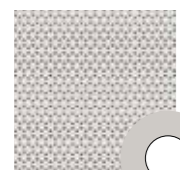
## PARALUME / STRUCTURE

Bianco / White  
Nero / Black  
Cordoncino in filo  
Thread cord

## ANELLO / SHELVES

Decoro grafico  
abbinato al colore  
Graphic motif to match  
the colour scheme

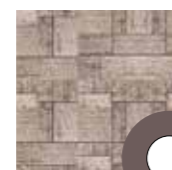
## DECORO / GRAPHIC



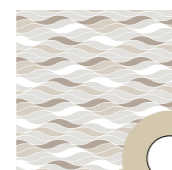
01B  
colore: grigio perla



01D  
colore: cenere



03A  
colore: terranova



Onda  
colore: juta



02C  
colore: petrolio



05C  
colore: verde



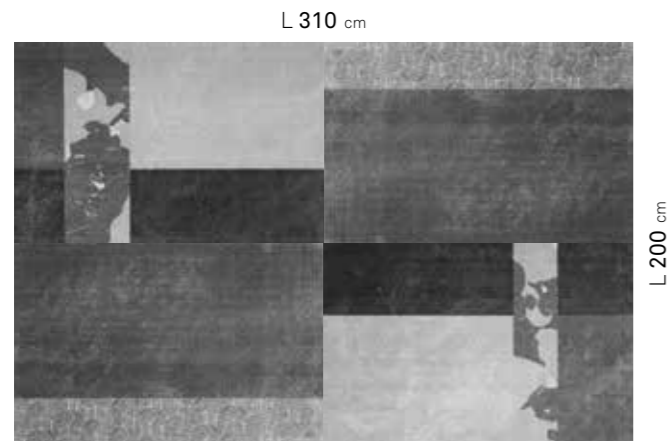
# tappeti

## CINIGLIA / CHENILLE

**Il tappeto di grandi dimensioni può essere utilizzato nella sua interezza o a porzioni singole.**

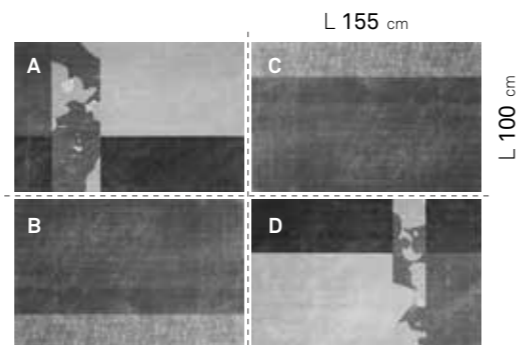
The large rug can be used in full or in single sections.

44



**TAPPETO TOTALE**  
TOTAL RUGS

L. 310 x P. 200 cm  
art. X870/1316



**PORZIONE SINGOLA**  
SINGLE SECTION

L. 155 x P. 100 cm  
A-D art. X871/329 B-C art. X872/329

**ATTENZIONE!**  
**Composto da 4 elementi separati**  
Il tappeto è adatto al solo utilizzo interno.  
Si consiglia il lavaggio a secco in lavanderia.

**PLEASE REMEMBER**  
**Composed of 4 separate elements**  
The carpet is for indoor use only.  
We recommend dry-cleaning it at the laundrette.

**Esempi di posizionamento**  
Layout examples



45



# wall paper

*Dress up*

## dressup collection

The wallpaper dresses and decorates the walls in this bathroom space. Whether single patterns or a mixture of coordinating designs, they match the furniture.

**Le carte da parati rivestono e decorano le pareti dell'ambiente bagno. Singole o in un mix di coordinati, le grafiche si abbinano agli arredi con stile.**

# 01

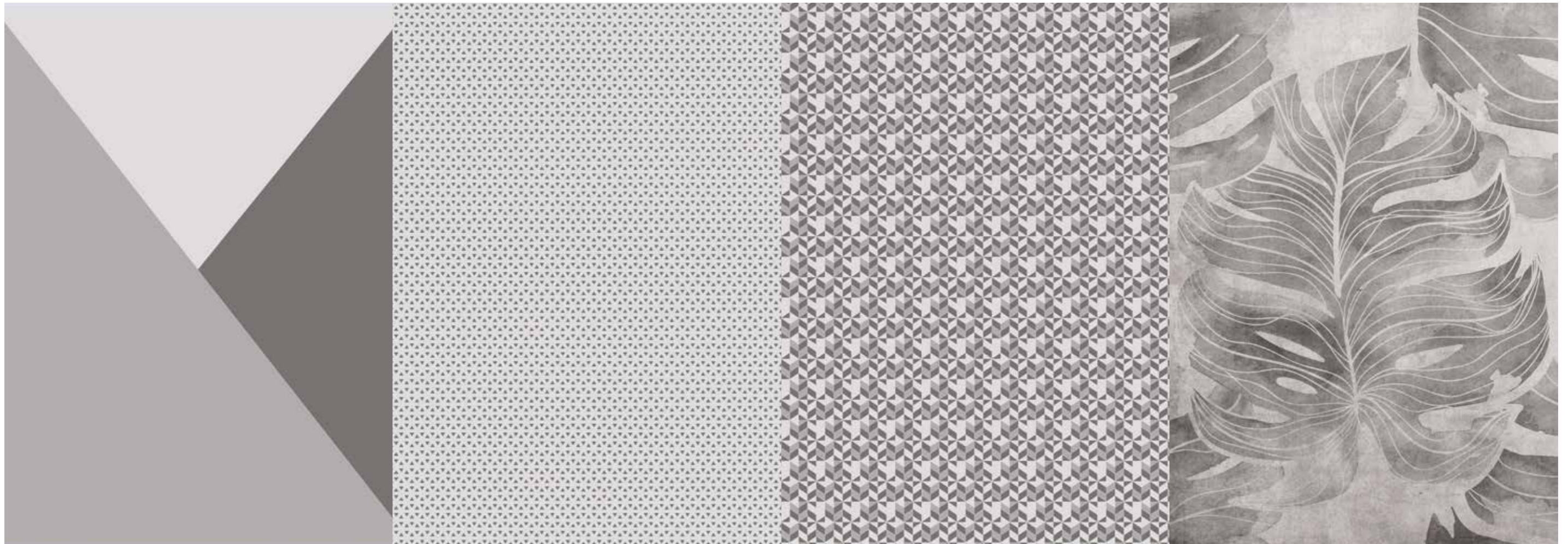
modern  
family

**Un coordinato dalle tinte neutre che accosta geometrie e foglie tropicali per ambienti moderni.**

A coordinated composition of neutral shades that brings together geometric shapes and tropical leaves for spaces with a modern look.

wall paper

48



49

01A

01B

01C

01D

# 02

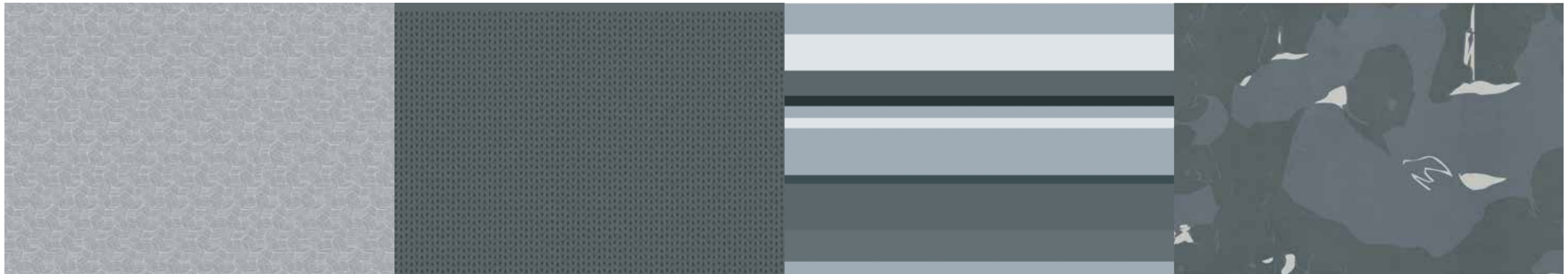
mix  
family

**Due palette di colori per un coordinato che mixa texture, righe ed effetti grafici per ambienti creativi.**

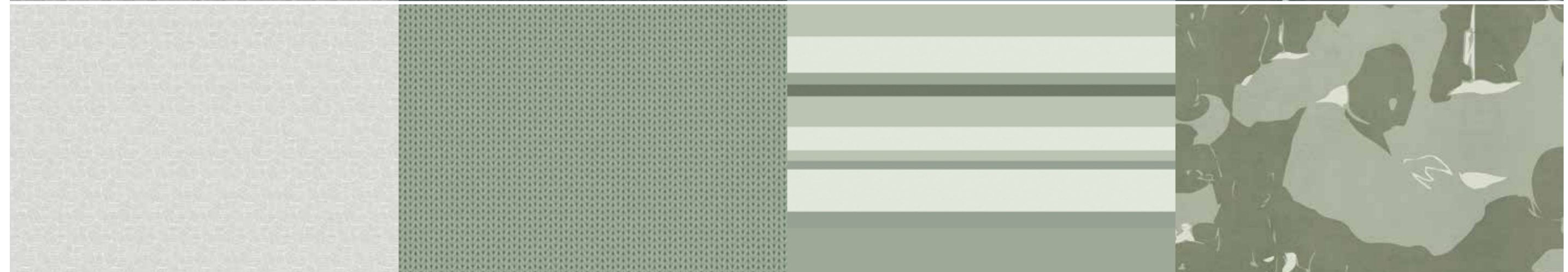
Two colour palettes create a coordinated mix of textures, lines and patterned effects for creative spaces.

wall paper

50



51



02A blu 05A verde

02B blu 05B verde

02C blu 05C verde

02D blu 05D verde

# 03

## texture

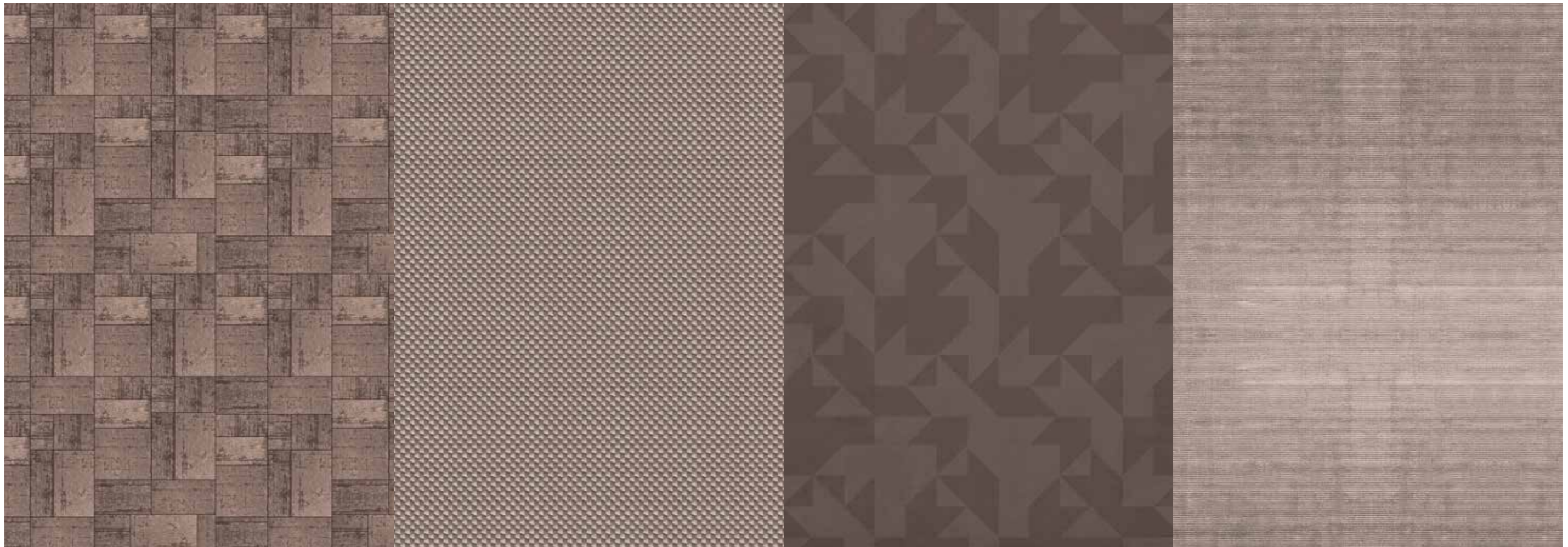
family

**Quattro trame diverse si coordinano e si armonizzano sulle pareti dell'ambiente bagno.**

Four different patterns coordinate harmoniously on the walls in the bathroom space.

wall paper

52



53

03A

03B

03C

03D marrone 03E grigio

# 04

elegance  
family

**Un colore pieno e pattern geometrici decorano  
nel loro insieme ambienti bagno eleganti.**

Full colour and geometric shapes together decorate  
an elegant bathroom space.

wall paper

54

55



04A

04B

04C

04D

# wall paper

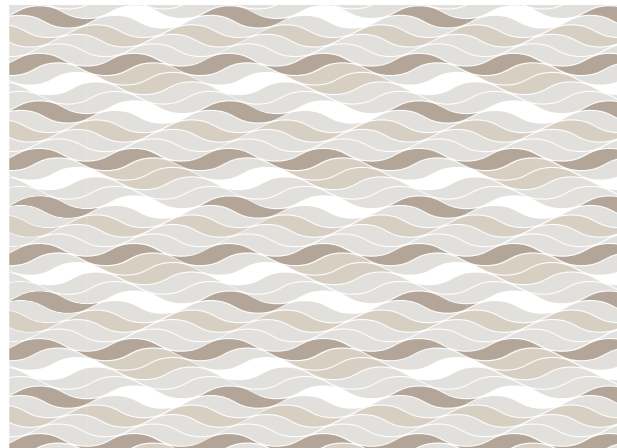
**Dalle lettere alle geometrie: una selezione di grafiche per portare sulla parete diverse decorazioni e stili.**

From letters to geometric shapes: a selection of patterns brings different decorations and styles to the walls.

56



Lettering



Onda



Iride \*  
\* Disponibile anche in bianco/nero - Available black and white



Piume



Marrakesh



Rombi



Anni 50



Spina pesce

57

# wall paper

Scegli l'effetto visivo suddividendo una delle grafiche secondo la griglia a moduli quadrati da 47 cm.

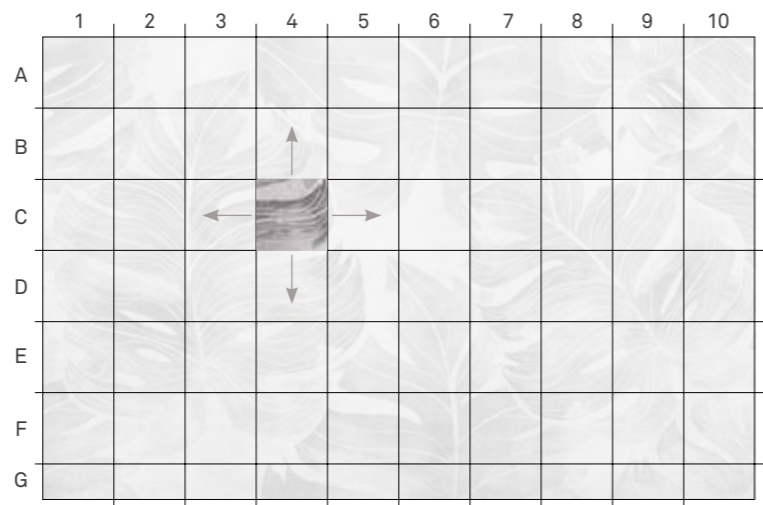
Select the desired visual effect from one of the six prints according to the 47 cm square module table.



58

Viene fornita in rotoli. È dotata di collante per il fissaggio alla parete.

Supplied in rolls. Equipped with glue for attachment to the walls.



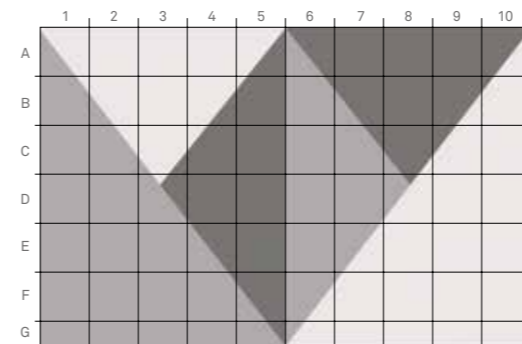
**DIMENSIONI MASSIME / MAXIMUM SIZE**

L.500 x H.320 cm  
art.X850/21

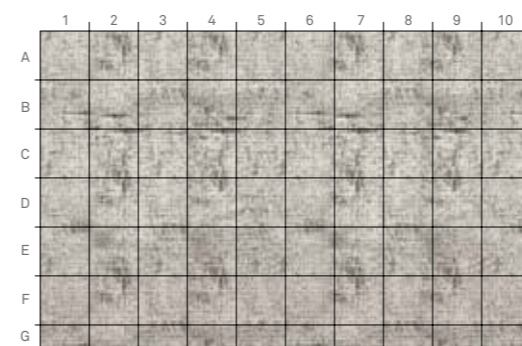
**1 MODULO da 47 x 47 cm /**  
1 47 X 47 CM MODULE



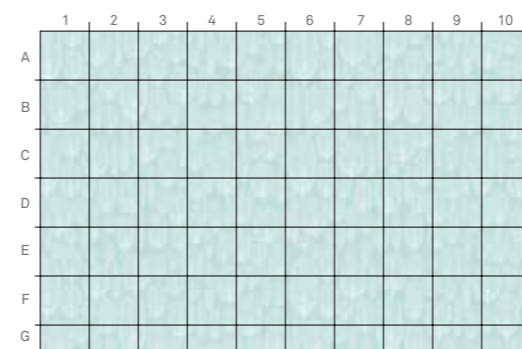
C 4



01A



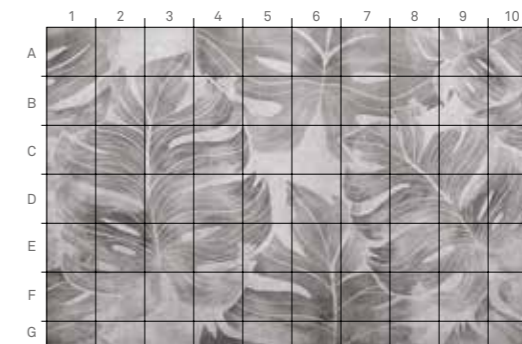
Lettering



Piume



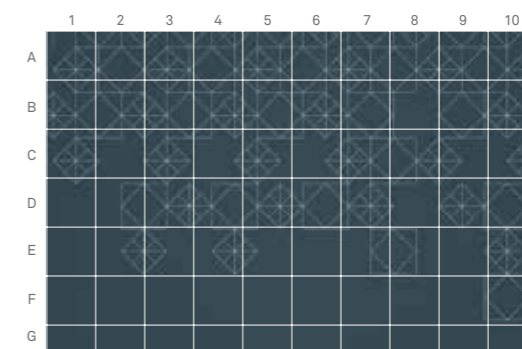
Anni 50



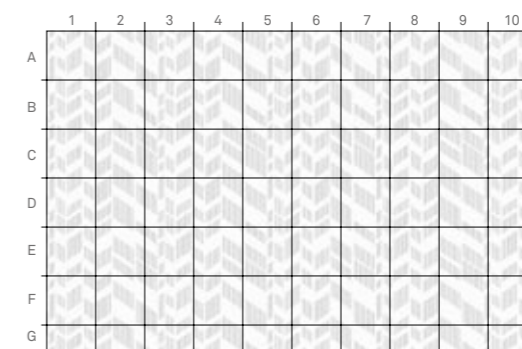
04A



Iride



Marrakesh



Spina di pesce

59

Design e coordinamento: Arcom  
Progetto Grafico: Lokomotiv  
Foto: Indoor  
Art direction photo and styling: Rossi & Co.  
Fotolito: Luce  
Stampa: Maggio 2018



# arcom

**ARCOM srl**

33070 Tamai di Brugnera / PN – Italy

Viale Europa 4 – z.i. del Camol

Tel. +39.0434.613619 /

+39.0434.1573020

Fax +39.0434.608137

e-mail: [info@arcombagno.com](mailto:info@arcombagno.com)

[www.arcombagno.com](http://www.arcombagno.com)

 **ATMA**  
INDUSTRIE DEL MOBILE

e-mail: [gruppoatma@gruppoatma.it](mailto:gruppoatma@gruppoatma.it)

<http://www.gruppoatma.it>